



SQUARE FLANGE
WALL MOUNT RECEPTACLE
AS PER MIL-C-5015

SCP3102R36-14S(N397)

TECHNICAL SPEC. NO.

et-0242-a

INTERNAL CODE: **TBD**

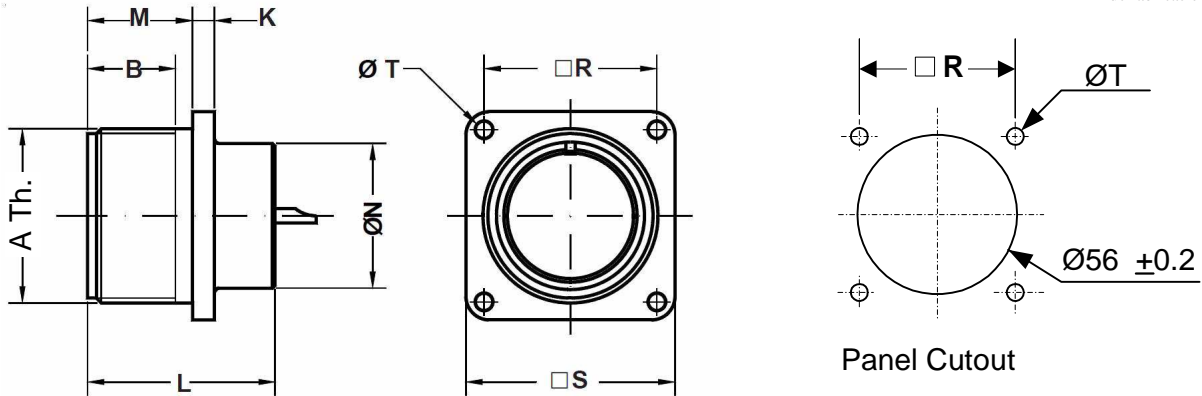
FILE: et-0242-a.vsd

DATE: 01/06/2011

PAGE. 1/1

Propiedad intelectual: Queda prohibida su reproducción total o parcial sin autorización previa por escrito del grupo SCP / SINTERSA

Documentación basada en especificaciones de fabricación

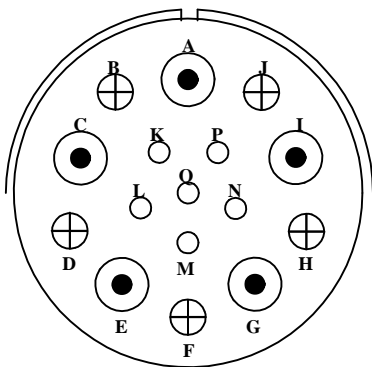


SHELL SIZE	A Thread -UN	B Min.	K ±0.2	L ±0.2	M +0.2 -0	N +0.2 -0	R ±0.1	S ±0.2	T +0.1 -0
36	2.25-16	17	4.0	37.3	22.3	52.4	49.20	63.5	4.3

PROTECTION: IP68, PROVIDED BY:

VULCANIZED JUNCTIONS BETWEEN METAL BODY TO INSERT AND INSERT TO CONTACTS AND FLAT NEOPRENE GASKET BETWEEN CONNECTOR BODY AND PANEL.

GOLD PLATED SOCKET CONTACTS.



Insert arrangement 36-14S.

Mating side view

- 5 contacts size 8
- 5 contacts size 12
- 6 contacts size 16

CONTACT SIZE	RATED CURRENT AT 20°C	MAX CONTACT RESISTANCE	USUAL WIRE SIZE
16	22A	6 mOHM	16 to 22 AWG
12	41A	3 mOHM	12-14 AWG
8	73A	1 mOHM	8-10 AWG

INSERT SERVICE RATING	OPERATING VOLTAGE Vdc	OPERATING VOLTAGE VacRMS	TEST VOLTAGE VacRMS	Min. INSULATING RESISTANCE MEGAOHM
D	1250	900	2800	≥ 5000

EDITADO:

ferusa

Fecha: 01/06/2011

EDICIONES

Nº	DESCRIPCIÓN	FECHA	VERIFICADO
a	PRIMER DISEÑO	01/06/11	OFICINA TÉCNICA