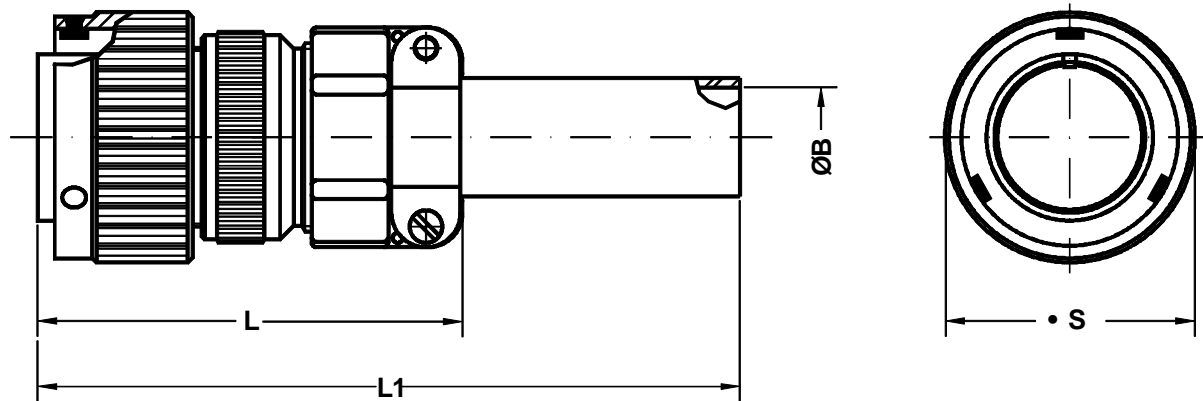


Conector aéreo recto
Straight plug



Ej. / Ex. : SCPB3106F20-27P

| Dimensiones de conector Shell size | Ø B ±0.1 | L Max. | L 1 Max. | Ø Q ±0.2 |
|--|-------------|-----------|-------------|-------------|
| 10 S L | 5.58 | 55.0 | 125 | 22.6 |
| 14 S | 7.92 | 58.4 | 125 | 29.0 |
| 16 S | 11.09 | 60.4 | 125 | 31.6 |
| 16 | 11.09 | 71.8 | 135 | 31.6 |
| 18 | 14.27 | 77.8 | 140 | 36.2 |
| 20 | 15.87 | 74.0 | 130 | 39.8 |
| 22 | 15.87 | 74.0 | 130 | 43.0 |
| 24 | 19.05 | 76.7 | 130 | 46.4 |
| 28 | 19.05 | 83.2 | 135 | 53.0 |
| 32 | 23.79 | 90.3 | 140 | 60.0 |
| 36 | 31.75 | 96.8 | 145 | 66.2 |
| 40 | 34.92 | 115.8 | 160 | 72.3 |

Conector aéreo recto.
Incluye zócalo estanco (grommet), adaptador
con mecanizado posterior, brida tipo A
(SCPB3057-XXA) para cable y manguito
reductor de neopreno.

Straight plug.
Includes insulating grommet, backshell,
class A SCPB3057-XXA cable clamp and
neoprene sleeve.