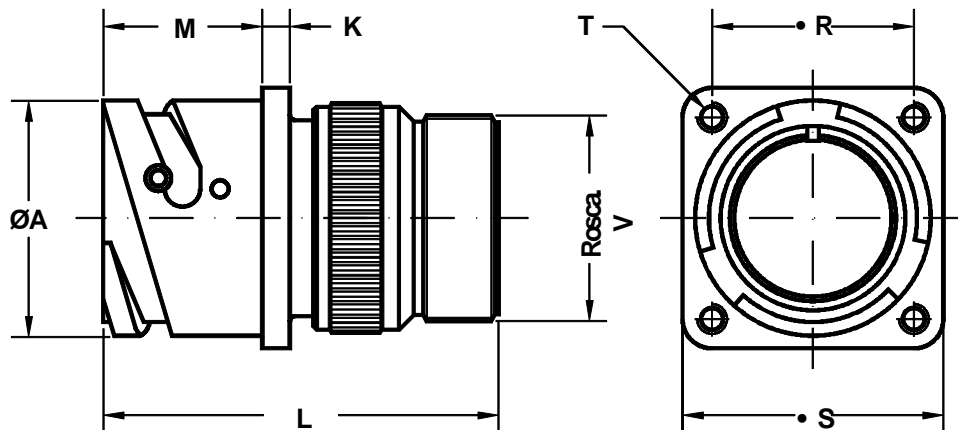


**Conector de base cuadrada para montaje trasero en panel**  
**Rear box mounting receptacle**



Ej. / Ex. : SCPB31030A20-27P

Dimensiones del conector Shell size	ØA 0 -0.1	K ±0.2	L Max.	M +0.2 0	R ±0.1	S +0.2	Rosca T T thread	Rosca V V thread
10 S L	18.2	2.8	49.0	18.5	18.25	25.4	M4	0.6250 - 24UNEF
14 S	24.5	3.3	51.5	18.5	23.00	30.4	M4	0.7500 - 20UNEF
16 S	27.2	3.3	51.5	18.5	24.60	32.5	M4	0.8750 - 20UNEF
16	27.2	3.3	63.0	23.2	24.60	32.5	M4	0.8750 - 20UNEF
18	30.7	4.0	63.0	23.2	27.00	35.0	M4	1.0000 - 20UNEF
20	34.0	4.0	63.0	23.2	29.40	38.0	M4	1.1875 - 18UNEF
22	37.3	4.0	63.0	23.2	31.75	41.0	M4	1.1875 - 18UNEF
24	40.9	4.0	64.5	23.2	34.90	44.5	M4	1.4375 - 18UNEF
28	46.7	4.0	71.0	24.4	39.70	50.9	M5	1.4375 - 18UNEF
32	53.4	4.0	76.5	24.2	44.45	57.0	M5	1.7500 - 18UNS
36	59.6	4.0	82.0	24.2	49.20	63.5	M5	2.0000 - 18UNS
40	65.5	4.0	82.0	24.4	55.55	69.9	M5	2.2500 - 16UN

Conector de base cuadrada para montaje trasero en panel.

Suministrado con adaptador para brida SCP3057-XX A/B/C.

Square flange receptacle for rear panel mounting.

Includes backshell for cable clamp IT3057-XX A/B/C.

No grommet supplied.