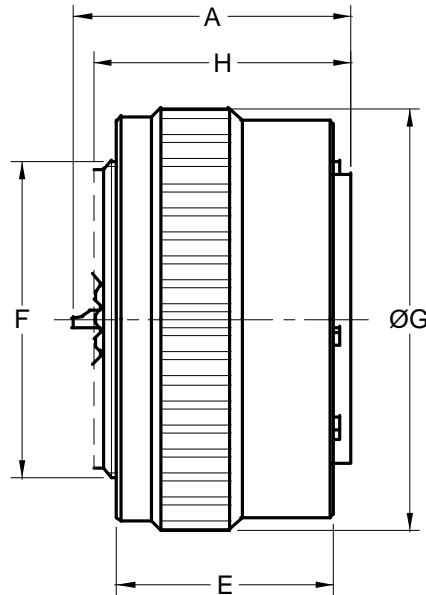


Conector aéreo recto Straight plug



Tamaño del conector Shell size	A Max.	H ±0.2	F Rosca en pulgadas Thread in inches	ØG Max.	E ±0.2
8	25.4	21.4	.4375 - 28 UNEF	19.05	18
10	25.4	21.4	.5625 - 24 UNEF	21.80	18
12	25.4	21.4	.6875 - 24 UNEF	26.20	18
14	25.4	21.4	.8125 - 20 UNEF	29.40	18
16	25.4	21.4	.9375 - 20 UNEF	32.55	18
18	25.4	21.4	1.0625 - 18 UNEF	35.35	18
20	27.8	25.4	1.1875 - 18 UNEF	38.90	19
22	27.8	25.4	1.3125 - 18 UNEF	42.10	19
24	27.8	27.0	1.4375 - 18 UNEF	45.10	20

Conector aéreo recto.
Suministrado sin cuello adaptador.
Disponible con racor de acoplamiento tipo Artic.

Straight plug without backshell .
Available with Arctic coupling nut .